



4"

WF SS Series

4" Rewindable

Water Filled Submersible Motor

4" WF SS Series

NIAGARA 4" WF SS Submersible Motor specially designed, with the latest manufacturing techniques. Years of experience, superior design and better manufacturing have resulted into development of this range of motor. Which are efficient and reliable in operation. Strict quality assurance during the total process assure trouble free and reliability in operation requiring minimum maintenance.

Applications:

Built for coupling with submersible multistage high and low load thrust 4" pumps for clean water deep well.

Technical Features:

- 4" WF SS Series Motors are water Lubricated and rewindable.
- Motor shaft is of AISI 420 grade or above.
- Stator shell is of AISI 304 grade.
- Winding wire poly propylene with insulation Class-B.
- Flange and shaft protrusion as per NEMA standard.
- Water lubricated radial and thrust bearing.
- Degree of protection: IP 68
- Mounting: vertical/horizontal.
- Single phase motors are capacitor start capacitor run.
- Dynamically balanced rotor ensure smooth running.
- Solid copper bars inserted in to our piece billet rotor offer great rigidity.
- Motor cable length: 3m/3core.

Operating limits:

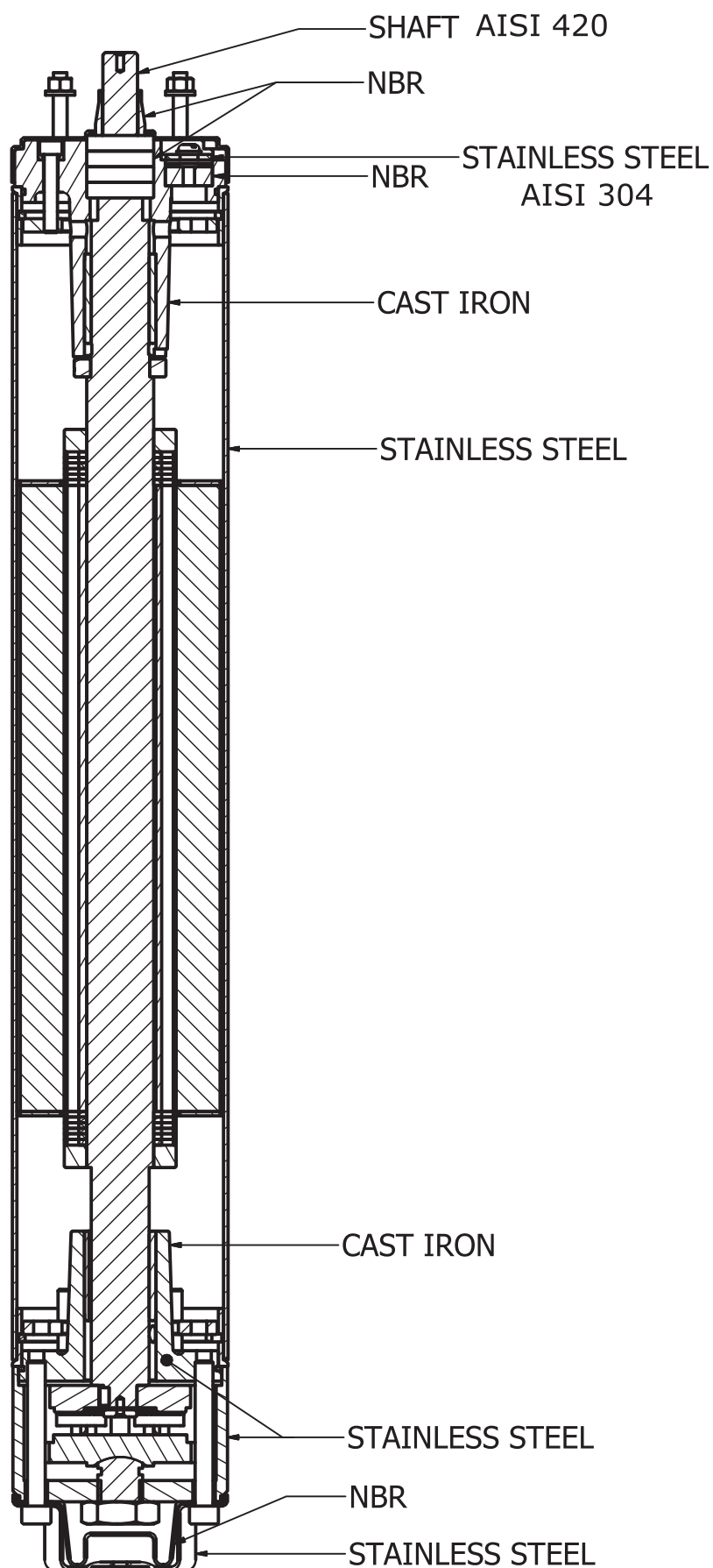
- Maximum allowable rating voltage fluctuation +6%-10%.
- Maximum motor starting per hour: 30
- Water well temperature range-0 to 30°C with minimum flow rate speed of 0.08m/s.
- Liquid for use clean water (Ph 6.5 to 8)
- Pumped liquids:-Clean, thin, non aggressive, non explosive, clear, cold, fresh water
- Without abrasives.
- Axial thrust: 3000N from 2.2 kw up to 7.5 kw.

Versions:

- Three Phase : 2.2 to 7.50 kW, 380-400-415 Volt / 50 Hz
- Three Phase : 2.5 to 7.50 kW, 230-380-460 Volt / 60 Hz

4" WF SS Series

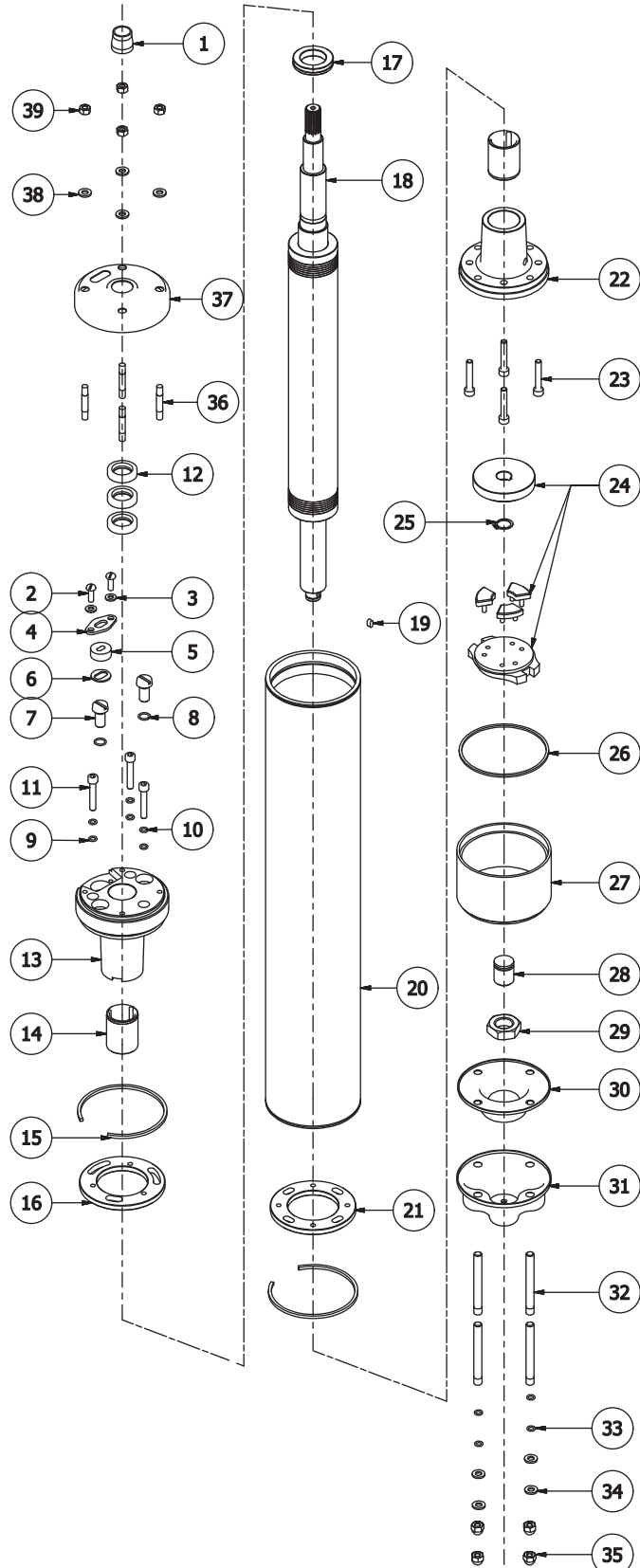
4" WF SS Motor Cross Sectional Drawing



4" WF SS Series

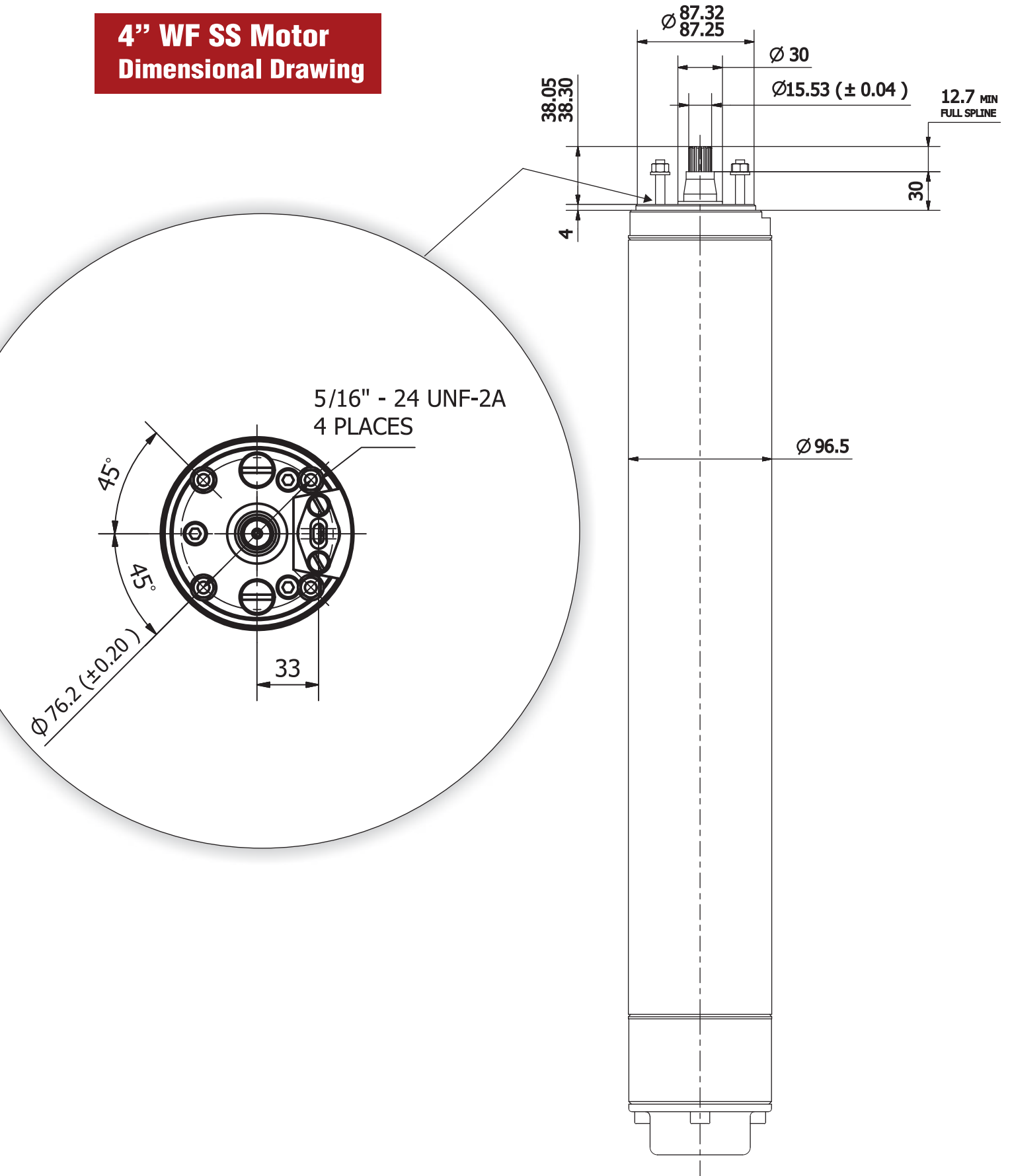
4" WF SS Motor Exploded View

Sr. No.	Part Name
1	SAND GUARD
2	CABLE CLIP SCREW
3	CABLE CLIP WASHER
4	CABLE CLIP
5	CABLE GROMMET
6	CABLE WASHER
7	DRAIN PLUG
8	DRAIN PLUG O - RING
9	COPPER WASHER
10	ALLEN BOLT O - RING
11	ALLEN BOLT
12	OIL SEAL
13	UPPER HOUSING
14	CARBON BEARING BUSH
15	CIRCLIP (INTERNAL)
16	UPPER FLANGE
17	STOP WASHER
18	ROTOR
19	KEY
20	STATOR
21	LOWER FLANGE
22	LOWER HOUSING
23	ALLEN BOLT
24	THRUST BEARING PAD SET
25	CIRCLIP (EXTERNAL)
26	MOTOR BASE RING
27	MOTOR BASE
28	ROCKOR
29	HEX NUT
30	PRESSURE CUP
31	MOTOR BASE COVER
32	STUD
33	O - RING
34	RADIUS WASHER
35	DUM NUT
36	STUD
37	CONNECTIVE JACKET
38	STUD WASHER
39	HEX NUT



4" WF SS Series

4" WF SS Motor Dimensional Drawing



50/60 Hz